



For Non-Armored Cable

Nylon, Cable Glands for Hazardous Duty Locations, **Black** (RAL 9005), V0, UL94, ULf1 (746C), NEMA 6, IP 68/69K, 150 PSIG, 10 BAR

Part Numbers	Cable Range	Thread Type & Size	Dimensions in Inches (mm)			
			A	B	C	F <sub>1</sub> /F
 (Standard)	Inches (mm)	Page 55 for Thread Specs	Clearance Hole	Body Length	Thread Length	Wrench Flats
			+ .01" (+.25 mm)	(Dome)	(Standard)	
CD09NA-BX	.16 - .31 (4 - 8)	3/8" NPT	.68 (17.2)	.87 (22)	.59 (15)	.74 (19) / .87 (22)
CD09NR-BX	.08 - .24 (2 - 6)					
CD13NA-BX	.26 - .47 (6.5 - 12)	1/2" NPT	.83 (21.1)	1.06 (27)	.51 (13)	.95 (24)
CD13NR-BX	.20 - .35 (5 - 9)					
CD16NA-BX	.39 - .55 (10 - 14)	1/2" NPT	.83 (21.1)	1.10 (28)	.51 (13)	1.06 (27)
CD16NR-BX	.28 - .47 (7 - 12)					
CD21NA-BX	.51 - .71 (13 - 18)	3/4" NPT	1.05 (26.7)	1.22 (31)	.55 (14)	1.29 (33)
CD21NR-BX	.35 - .63 (9 - 16)					
CD29NA-BX	.71 - .98 (18 - 25)	1" NPT	1.35 (34.3)	1.53 (39)	.75 (19)	1.65 (42)
CD29NR-BX	.51 - .79 (13 - 20)					
CD29LA-BX	.71 - .98 (18 - 25)	1-1/4" NPT	1.65 (41.9)	1.53 (39)	.63 (16)	1.62 (42)/1.81 (46)
CD29LR-BX	.51 - .79 (13 - 20)					
CD36NA-BX	.87 - 1.26 (22 - 32)	1-1/2" NPT	1.92 (48.7)	1.89 (48)	.79 (20)	2.09 (53)
CD36NR-BX	.79 - 1.02 (20 - 26)					

\*Note: UL f1 (746C) rating applies to Black Nylon Fittings only.

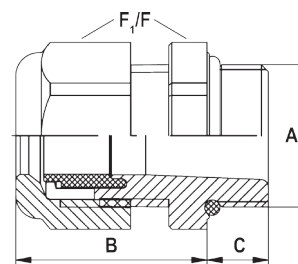
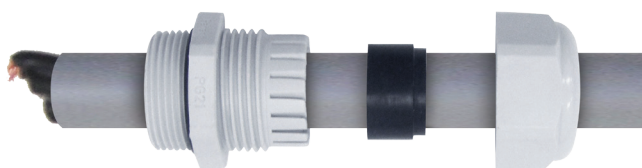
Nylon, Cable Glands for Hazardous Duty Locations, **Gray** (RAL 7035), V0, UL94, NEMA 6, 150 PSIG, IP 68/69K, 10 BAR

Part Numbers	Cable Range	Thread Type & Size	Dimensions in Inches (mm)			
			A	B	C	F <sub>1</sub> /F
 (Standard)	Inches (mm)	Page 55 for Thread Specs	Clearance Hole	Body Length	Thread Length	Wrench Flats
			+ .01" (+.25 mm)	(Dome)	(Standard)	
CD09NA-GX	.16 - .31 (4 - 8)	3/8" NPT	.68 (17.2)	.87 (22)	.59 (15)	.74 (19) / .87 (22)
CD09NR-GX	.08 - .24 (2 - 6)					
CD13NA-GX	.26 - .47 (6.5 - 12)	1/2" NPT	.83 (21.1)	1.06 (27)	.51 (13)	.95 (24)
CD13NR-GX	.20 - .35 (5 - 9)					
CD16NA-GX	.39 - .55 (10 - 14)	1/2" NPT	.83 (21.1)	1.10 (28)	.51 (13)	1.06 (27)
CD16NR-GX	.28 - .47 (7 - 12)					
CD21NA-GX	.51 - .71 (13 - 18)	3/4" NPT	1.05 (26.7)	1.22 (31)	.55 (14)	1.29 (33)
CD21NR-GX	.35 - .63 (9 - 16)					
CD29NA-GX	.71 - .98 (18 - 25)	1" NPT	1.35 (34.3)	1.53 (39)	.75 (19)	1.65 (42)
CD29NR-GX	.51 - .79 (13 - 20)					
CD29LA-GX	.71 - .98 (18 - 25)	1-1/4" NPT	1.65 (41.9)	1.53 (39)	.63 (16)	1.62 (42)/1.81 (46)
CD29LR-GX	.51 - .79 (13 - 20)					
CD36NA-GX	.87 - 1.26 (22 - 32)	1-1/2" NPT	1.92 (48.7)	1.89 (48)	.79 (20)	2.09 (53)
CD36NR-GX	.79 - 1.02 (20 - 26)					



(BX)

(GX)



Suggested Clearance Hole for Non-Threaded Mounting

Ex-d EXIOS Cable Glands  
 Ex-d Nickel Plated Brass & Stainless Steel Glands  
 Nylon Glands  
 Ex-e Multi-Hole & Romex Glands  
 Ex-e Nickel Plated Brass & Stainless Steel Glands  
 Ex-e FMI / RFI Nickel Plated Brass Glands  
 Ex-e Conduit & Fitting Systems  
 Ex-e / Ex-d Accessories  
 Technical Information