



Committed to Excellence!

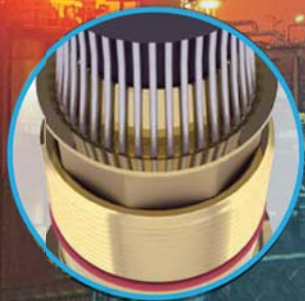
www.sealconusa.com

Cable Glands for Hazardous Areas



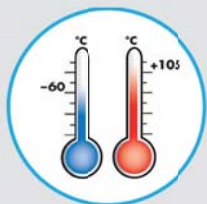
EXIOS

Cable Glands for Hazardous Areas (Explosion Proof)



- Dual seal on inner and outer cable jackets
- Armor acceptance range from 0 - 0.1" (0 - 2.5 mm)
- Maximum clamping range

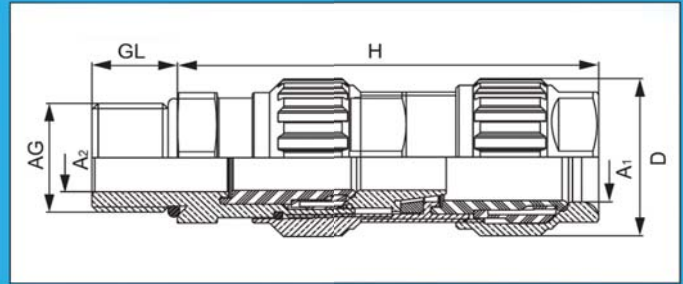
- Innovative Interlocking Armor Cone
- Zero torsion on cable cores and armor
- Fast and easy pre-assembly by hand by the use of profile material with maximum grip



- According to the latest IECEx and ATEX standards
- Ex-d /Ex-e
- Zone 1, Zone 2, Zone 20, Zone 21 and Zone 22
- Gas Groups IIA, IIB and IIC - Apparatus Group III
- Equipment Protection Level GbDa
- IP 68 5 bar, EN 60529
- Temperature Range -60°C to +105°C (-76°F to 221°F)
- Halogen- and phosphorous-free
- Silicone Seals and O-Rings as standard



Mechanical Data	Materials and Technical Data
Material	Brass, Nickel Plated Brass, Stainless
Seals / O-Rings	Silicone, VMQ
Clamping inserts	PA 6 Fire Protection Class V-2 UL94
Armor	Metallic Armor or Screen
Temperature Range	-60 °C - 105 °C (-76°F - 221°F)
Protection	IP 68, 5 bar



Metric Brass - Dimensions in Inches (mm)

Part Numbers	Size Type	Thread AG	mm	D	H max	GL	Armor \varnothing mm		Clamping Ring 1	Clamping Ring 2	Ring 3 Optional
							\varnothing A1	\varnothing A2			
YE16MK-BB	20 - 1	M16 x 1.5	.87 (22)	1.06 (27)	2.74 (69.5)	.63 (16)	.24 - .47 (6 - 12)	.12 - .32 (3 - 8.1)	0 - 0.03 (0 - 0.7)	0.03 - 0.05 (0.7 - 1.25)	-
YE20MK-BB		M20 x 1.5									
YE20MM-BB	20 - 2	M20 x 1.5	.94 (24)	1.14 (29)	2.93 (74.3)	.63 (16)	.35 - .63 (9 - 16)	.24 - .47 (6 - 12)	0 - 0.03 (0 - 0.7)	0.03 - 0.05 (0.7 - 1.25)	-
YE20ML-BB	20 - 3	M20 x 1.5	1.18 (30)	1.38 (35)	3.17 (80.5)	.63 (16)	.49 - .81 (12.5 - 20.5)	.35 - .55 (9 - 14)	0 - 0.03 (0 - 0.7)	0.03 - 0.06 (0.7 - 1.4)	-
YE25MK-BB	20 - 3	M25 x 1.5	1.18 (30)	1.38 (35)	3.17 (80.5)	.63 (16)	.49 - .81 (12.5 - 20.5)	.35 - .55 (9 - 14)	0 - 0.03 (0 - 0.7)	0.03 - 0.06 (0.7 - 1.4)	-
YE25MM-BB	25	M25 x 1.5	1.42 (36)	1.65 (42)	3.58 (91)	.63 (16)	.67 - 1.02 (16.9 - 26)	.49 - .81 (12.5 - 20.5)	0 - 0.03 (0 - 0.7)	0.04 - 0.06 (0.9 - 1.6)	0.03 - 0.06 (0.7 - 1.4)
YE32MK-BB	32	M32 x 1.5	1.81 (46)	2.05 (52)	3.78 (96)	.63 (16)	.87 - 1.30 (22 - 33)	.67 - 1.02 (16.9 - 26)	0 - 0.03 (0 - 0.7)	0.05 - 0.08 (1.3 - 2.0)	0.03 - 0.06 (0.7 - 1.4)
YE40MK-BB	40	M40 x 1.5	2.17 (55)	2.52 (64)	4.21 (107)	.63 (16)	1.10 - 1.61 (28 - 41)	.87 - 1.30 (22 - 33)	0 - 0.03 (0 - 0.7)	0.05 - 0.08 (1.3 - 2.0)	0.03 - 0.06 (0.7 - 1.4)
YE50MK-BB	50	M50 x 1.5	2.60 (65)	2.87 (73)	5.18 (131.5)	.63 (16)	1.42 - 2.07 (36 - 52.6)	1.14 - 1.75 (28.9 - 44.4)	0 - 0.04 (0 - 1.0)	0.06 - 0.10 (1.5 - 2.5)	0.04 - 0.08 (1.0 - 2.0)
YE63MK-BB	63	M63 x 1.5	3.15 (80)	3.54 (90)	5.69 (144.5)	.63 (16)	1.81 - 2.57 (46 - 65.3)	1.57 - 2.22 (39.9 - 56.3)	0 - 0.04 (0 - 1.0)	0.06 - 0.10 (1.5 - 2.5)	0.04 - 0.08 (1.0 - 2.0)
YE75MK-BB	75	M75 x 1.5	3.74 (95)	4.21 (107)	6.06 (154)	.63 (16)	2.24 - 3.07 (57 - 78)	1.99 - 2.69 (50.5 - 68.2)	0 - 0.04 (0 - 1.0)	0.06 - 0.10 (1.5 - 2.5)	0.04 - 0.08 (1.0 - 2.0)

NPT Brass - Dimensions in Inches (mm)

Part Numbers	Size Type	Thread AG	mm	D	H max	GL	Armor \varnothing mm		Clamping Ring 1	Clamping Ring 2	Ring 3 Optional
							\varnothing A1	\varnothing A2			
YE09NK-BB	20 - 1	3/8" NPT	.87 (22)	1.06 (27)	2.74 (69.5)	.63 (16)	.24 - .47 (6 - 12)	.12 - .32 (3 - 8.1)	0 - 0.03 (0 - 0.7)	0.03 - 0.05 (0.7 - 1.25)	-
YE13NM-BB	20 - 2	1/2" NPT	.94 (24)	1.14 (29)	2.93 (74.3)	.79 (20)	.35 - .63 (9 - 16)	.24 - .47 (6 - 12)	0 - 0.03 (0 - 0.7)	0.03 - 0.05 (0.7 - 1.25)	-
YE13NL-BB	20 - 3	1/2" NPT	1.18 (30)	1.38 (35)	3.17 (80.5)	.79 (20)	.49 - .81 (12.5 - 20.5)	.35 - .55 (9 - 14)	0 - 0.03 (0 - 0.7)	0.03 - 0.06 (0.7 - 1.4)	-
YE21NK-BB	25	3/4" NPT	1.42 (36)	1.65 (42)	3.58 (91)	.81 (20.5)	.67 - 1.02 (16.9 - 26)	.49 - .81 (12.5 - 20.5)	0 - 0.03 (0 - 0.7)	0.04 - 0.06 (0.9 - 1.6)	0.03 - 0.06 (0.7 - 1.4)
YE29NK-BB	32	1" NPT	1.81 (46)	2.05 (52)	3.78 (96)	1.02 (26)	.87 - 1.30 (22 - 33)	.67 - 1.02 (16.9 - 26)	0 - 0.03 (0 - 0.7)	0.05 - 0.08 (1.3 - 2.0)	0.03 - 0.06 (0.7 - 1.4)
YE29LK-BB	40	1 1/4" NPT	2.17 (55)	2.52 (64)	4.21 (107)	1.04 (26.5)	1.10 - 1.61 (28 - 41)	.87 - 1.30 (22 - 33)	0 - 0.03 (0 - 0.7)	0.05 - 0.08 (1.3 - 2.0)	0.03 - 0.06 (0.7 - 1.4)
YE36NK-BB		1 1/4" NPT									
YE50NK-BB	50	2" NPT	2.60 (65)	2.87 (73)	5.18 (131.5)	1.06 (27)	1.42 - 2.07 (36 - 52.6)	1.14 - 1.75 (28.9 - 44.4)	0 - 0.04 (0 - 1.0)	0.06 - 0.10 (1.5 - 2.5)	0.04 - 0.08 (1.0 - 2.0)
YE52NK-BB	63	2 1/2" NPT	3.15 (80)	3.54 (90)	5.69 (144.5)	1.57 (40)	1.81 - 2.57 (46 - 65.3)	1.57 - 2.22 (39.9 - 56.3)	0 - 0.04 (0 - 1.0)	0.06 - 0.10 (1.5 - 2.5)	0.04 - 0.08 (1.0 - 2.0)
YE30NK-BB	75	3" NPT	3.74 (95)	4.21 (107)	6.06 (154)	1.63 (41.5)	2.24 - 3.07 (57 - 78)	1.99 - 2.69 (50.5 - 68.2)	0 - 0.04 (0 - 1.0)	0.06 - 0.10 (1.5 - 2.5)	0.04 - 0.08 (1.0 - 2.0)

Materials Part Number Key

xxxxx-BB = Raw Brass

xxxxx-BR = Nickel Plated Brass

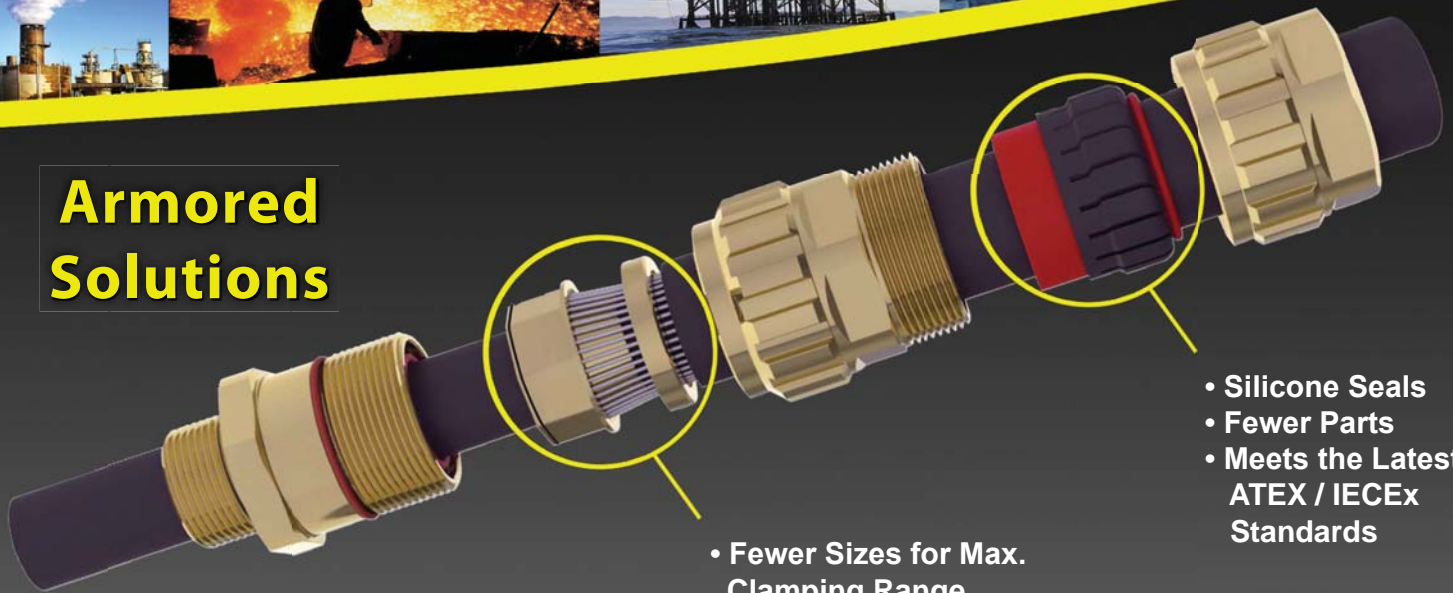
xxxxx-B1 = Brass Gland with Nickel Plated Thread

xxxxx-SS = Stainless Steel 316





Armored Solutions



- Fewer Sizes for Max. Clamping Range
- Secured Interlocking Armor Cone
- Silicone Seals
- Fewer Parts
- Meets the Latest ATEX / IECEx Standards

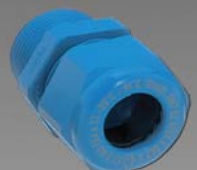


Non-Armored Solutions

Ex-e Approved



Standard / Elongated Threads
(Nylon / Nickel Plated Brass)

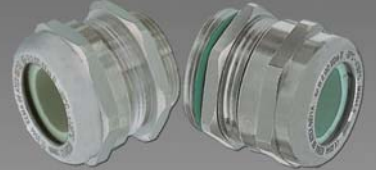


Intrinsically Safe
(Blue)

Ex-d Approved



A2 / A2F



Stainless Steel /
Nickel Plated Brass

Accessories



Clamping (MZ)
(High Performance)



Multi-Hole / Romex®
(Nylon / Nickel Plated Brass)



Hex Plugs



Hole Plugs



Reducers



Setting Standards!

* Romex® - Registered Trademark of the Southwire Company