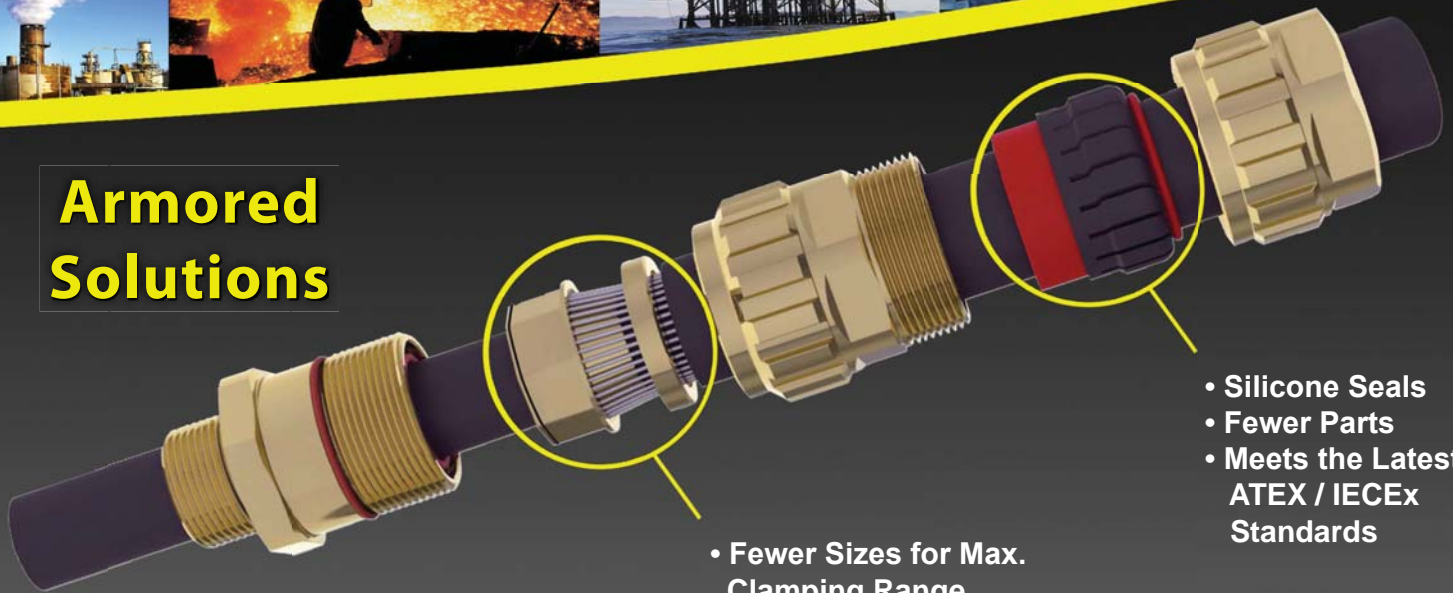




Armored Solutions



- Fewer Sizes for Max. Clamping Range
- Secured Interlocking Armor Cone

- Silicone Seals
- Fewer Parts
- Meets the Latest ATEX / IECEx Standards



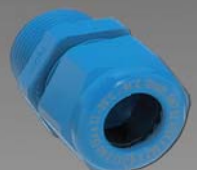
Ex-e Approved

Non-Armored Solutions

Ex-d Approved



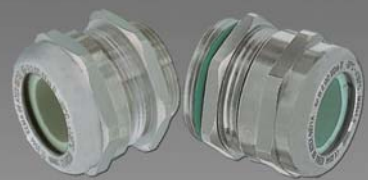
Standard / Elongated Threads
(Nylon/ Nickel Plated Brass)



Intrinsically Safe
(Blue)



A2 / A2F



Stainless Steel /
Nickel Plated Brass



Clamping (MZ)
(High Performance)



Multi-Hole / Romex®*
(Nylon / Nickel Plated Brass)



Hex Plugs



Hole Plugs



Reducers



* Romex® - Registered Trademark of the Southwire Company