

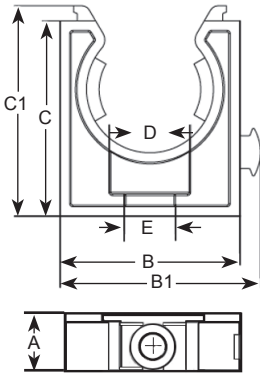
(RAL 9005)

- Fast installation of flexible Polyamide Conduit
- ATEX Certified Conduit
- Standard applications in hazardous locations type "e"

Corrugated Conduit: Snapflex-Ex				
Part Numbers -4°F to 203°F (-20°C to 95°C)	Snapflex-Ex Conduit Size	Roll Length feet (m)	Dimensions	
			Inner Diameter (A)	Outer Diameter (B)
			Inches (mm)	Inches (mm)
SF-1016-BX	16	164 (50)	.42 (10.7)	.63 (16)
SF-1420-BX	20	164 (50)	.55 (14.1)	.79 (20)
SF-1825-BX	25	164 (50)	.72 (18.3)	.98 (25)
SF-2432-BX	32	164 (50)	.96 (24.3)	1.26 (32)
SF-3140-BX	40	82 (25)	1.23 (31.2)	1.57 (40)

Conduits of the Snapflex-Ex series are based on Metric dimensions. They were designed for standard application in hazard location type "e" according to EN 60079-0 and EN 60079-7.

Mounting Brackets - Nylon - Snapclip-Ex
Conduit System - Metric - Ex-e



Hold conduit securely in place.
Material: Black Nylon 6/6

Mounting Brackets								
Part Numbers -4°F to 203°F (-20°C to 95°C)	Fits Snapflex-Ex Conduit Size	Dimensions						
		A	B	B1	C	C1	D	E
		Width	Length	Overall- Length	Height	Overall- Height	Mounting Hole ø	Mounting Hole Recess ø
MC-16-BX	16	.47 (12)	.83 (21)	.82 (27)	1.06 (27)	1.16 (29.5)	.21 (5.3)	.39 (10)
MC-20-BX	20	.47 (12)	1.10 (28)	1.46 (37)	1.22 (31)	1.32 (33.5)	.21 (5.3)	.39 (10)
MC-25-BX	25	.59 (15)	1.34 (34)	1.46 (37)	1.42 (36)	1.42 (36)	.21 (5.3)	.39 (10)
MC-32-BX	32	.63 (16)	1.65 (42)	1.67 (42.5)	1.69 (43)	1.79 (45.5)	.21 (5.3)	.39 (10)
MC-40-BX	40	.63 (16)	2.01 (51)	2.05 (52)	2.01 (51)	2.11 (53.5)	.21 (5.3)	.39 (10)

Conduit & Strain Relief Fittings - Snapclc DUO
Nickel Plated Brass - Conduit System - Metric - Ex-e

Snapclc DUO Conduit Fitting - Nickel Plated Brass								
Part Numbers -4°F to 203°F (-20°C to 95°C)	Cable Range	Thread Type & Size	Snapflex- Ex Conduit Size	Dimensions				
				A	B	C	D	F
	Inches (mm)	Page 59 for Thread Specs		Hole O.D. +.01" (+.25 mm)	Thread Length	Body Length	Outer Diameter	Wrench Flat
DUO17MA-MX	.20 - .39 (5 - 10)	M16 x 1.5	16	.63 (16)	.24 (6)	.984 (25)	1.52 (38.5)	.94/.79 (24/20)
DUO17MR-MX	.12 - .28 (3 - 7)							
DUO22MA-MX	.39 - .55 (10 - 14)	M20 x 1.5	20	.79 (20)	.24 (6)	1.18 (30)	1.63 (41.5)	1.10/.94 (28/24)
DUO22MR-MX	.28 - .47 (7 - 12)							
DUO25MA-MX	.51 - .71 (13 - 18)	M25 x 1.5	25	.98 (25)	.28 (7)	1.38 (35)	1.75 (44.5)	1.34/1.18 (34/30)
DUO25MR-MX	.35 - .63 (9 - 16)							
DUO32MA-MX	.71 - .94 (18 - 24)	M32 x 1.5	32	1.26 (32)	.31 (8)	1.65 (42)	2.07 (52.5)	1.57 (40)
DUO32MR-MX	.51 - .79 (13 - 20)							
DUO40MA-MX	.87 - 1.22 (22 - 31)	M40 x 1.5	40	1.57 (40)	.31 (8)	1.97 (50)	2.32 (59)	1.97 (50)
DUO40MR-MX	.79 - 1.02 (20 - 26)							

Protection Rating:
Threaded / Installation side - IP 68
Conduit side - IP 54

Also Available In PG, NPT & Elongated Threads with EMI protection!

800-456-9012



Suggested Clearance Hole for Non-Threaded Mounting

