

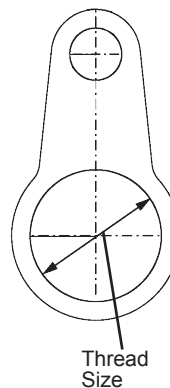


Ex-e Accessories - Red Fiber Washer & Grounding (Earth) Tag - NPT & Metric Sizes



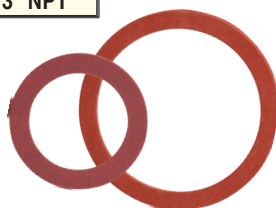
Reinforced Nylon - Red Fiber Seal Rings - NPT			
Part Numbers	Seal Ring Thickness	Fits Thread Size	
-76°F to 221°F (-60°C to 105°C)	1.5	Page 55 for Thread Specs	
 (Standard)			
SR-09-FN			3/8" NPT
SR-13-FN			1/2" NPT
SR-21-FN			3/4" NPT
SR-29-FN			1" NPT
SR-54-FN			1 1/4" NPT
SR-36-FN			1 1/2" NPT
SR-20-FN			2" NPT
SR-52-FN			2 1/2" NPT
SR-30-FN	3" NPT		


Reinforced Nylon - Red Fiber Seal Rings - Metric			
Part Numbers	Seal Ring Thickness	Fits Thread Size	
-76°F to 221°F (-60°C to 105°C)	1.5	Page 55 for Thread Specs	
 (Standard)			
SM-16-FN			M16 x 1.5
SM-20-FN			M20 x 1.5
SM-25-FN			M25 x 1.5
SM-32-FN			M32 x 1.5
SM-40-FN			M40 x 1.5
SM-50-FN			M50 x 1.5
SM-63-FN			M63 x 1.5
SM-75-FN			M75 x 1.5



Raw Brass (BB) & Nickel Plated Brass (BR) Grounding (Earth) Tags are installed


between the cable gland & equipment to provide a proper grounding bond connection.





Grounding (Earth) Tags		
Part Numbers	Thread Type & Size	
-4°F to 203°F (-20°C to 95°C)	Page 55 for Thread Specs	
 (Raw Brass & NPB)		
TN-09-BB		3/8" NPT
TN-13-BB		1/2" NPT
TN-21-BB		3/4" NPT
TN-54-BB		1 1/4" NPT
TN-36-BB		1 1/2" NPT
TN-20-BB		2" NPT
TN-52-BB		2 1/2" NPT
TN-30-BB		3" NPT
TN-13-BR	1/2" NPT	
TN-21-BR	3/4" NPT	
TN-29-BR	1" NPT	
TM-20-BB	M20 x 1.5	
TM-25-BB	M25 x 1.5	
TM-32-BB	M32 x 1.5	
TM-40-BB	M40 x 1.5	
TM-50-BB	M50 x 1.5	
TM-63-BB	M63 x 1.5	
TM-75-BB	M75 x 1.5	

Ex-e Accessories - Serrated Washers & Shrouds NPT & Metric Sizes

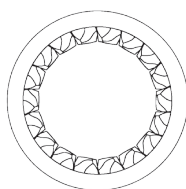


Serrated Washers - NPT		
Part Numbers	Fits Thread Size	
-4°F to 203°F (-20°C to 95°C)	Page 55 for Thread Specs	
 (Stainless Steel)		
WN-09-SS		3/8" NPT
WN-13-SS		1/2" NPT
WN-21-SS		3/4" NPT
WN-29-SS		1" NPT
WN-54-SS		1 1/4" NPT
WN-36-SS		1 1/2" NPT
WN-20-SS		2" NPT
WN-52-SS		2 1/2" NPT
WN-30-SS	3" NPT	

Serrated Washers - Metric		
Part Numbers	Fits Thread Size	
-4°F to 203°F (-20°C to 95°C)	Page 55 for Thread Specs	
 (Stainless Steel)		
WM-16-SS		M16 x 1,5
WM-20-SS		M20 x 1,5
WM-25-SS		M25 x 1,5
WM-32-SS		M32 x 1,5
WM-40-SS		M40 x 1,5
WM-50-SS		M50 x 1,5
WM-63-SS		M63 x 1,5
WM-75-SS		M75 x 1,5

Shroud - NPT & Metric				
Part Numbers	Fits EXIOS Size	Fits Thread Size		
 (PVC)	Page 55 for Thread Specs	Page 55 for Thread Specs		
SE-2K-PV			20-1	3/8" NPT / M20
SE-2M-PV			20-2	1/2" NPT / M20
SE-2L-PV			20-3	1/2" NPT / M25
SE-25-PV			25	3/4" NPT / M25
SE-32-PV			32	1" NPT / M32
SE-40-PV			40	1-1/4" NPT / M40
SE-50-PV			50	2" NPT / M50
SE-63-PV			63	2-1/2" NPT / M63
SE-75-PV			75	3" NPT / M75

Provides additional weather and corrosion protection of a cable gland in Hazardous area locations.



Ex-d EXIOS Cable Glands
Ex-d Nickel Plated Brass & Stainless Steel Glands
Nylon Glands
Ex-e Nylon Glands
Ex-e Multi-Hole & Romex Glands
Ex-e Nickel Plated Brass & Stainless Steel Glands
Ex-e EMI / RFI Nickel Plated Brass Glands
Ex-e Conduit & Fitting Systems
Ex-e / Ex-d Accessories
Technical Information