

# Sealcon Circular Connector Options

## Features & Benefits

- Patented Eurolock®** - on all Power and M16 style Connectors
- Easy field assembly** - no special tools required to insert & extract contacts
- Built in Strain Relief for Braided Cable** - All Connectors EMI/RFI ready
- Quick Connect System** - Threaded & Twilock in one
- Multiple Terminations** - Crimp, Solder, Dip Solder, and Screw Terminal Solutions
- Pre-tinned Contacts** - Reliable, faster and safer means of soldering
  - M23 connectors work with stamped contacts
- Reliable Connection** - Contacts with low plug-in force and high mating cycles
- Vibration Proof** - Spring loaded Socket Contact Technology
- IP67 & IP69K** - Ideal in spray down applications

**Materials:** Nickel Plated Brass, Stainless Steel, Over Molded (Optional Tin-Plated)

**Types:** Straight, Elbow, Panel Mount, Radius Flange & RJ45 (Ethernet) & EMI Ready!

**Other Styles:** Hermetic, Marine (IP68), Miniature / Push-Pull



M23 Twilock & Twilock-S



Quick Connect

M27

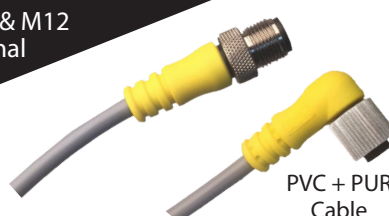
26 & 28 contacts



M16



M8 & M12 Signal



PVC + PUR Cable

M40



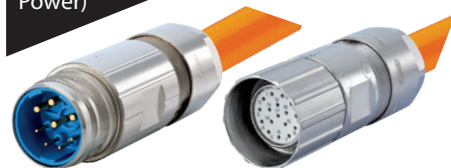
High Power  
55 AMP

M23 Hybrid

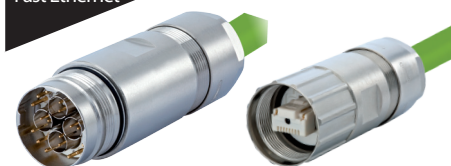
Power, Signal and Ethernet in one



M23 (Signal & Power)



M23 RJ45 & PoE Fast Ethernet



M12 Power



K+L, S+T Coding

## Circular Connector Markets Served



- Oil & Gas Production
- Refineries
- Oilfield Service Companies
- The Petroleum Industry
  - Energy/Coal
  - Process Industry
  - Paint Manufacturing
- Chemical Industries
- Pharmaceutical
- Waste
- Wood Processing
- Agriculture
- Metal
- Food Processing
- Recycling
- Motion Control
- Construction
  - Textile
  - Marine
- International Companies
- Industrial Manufacturing Sector